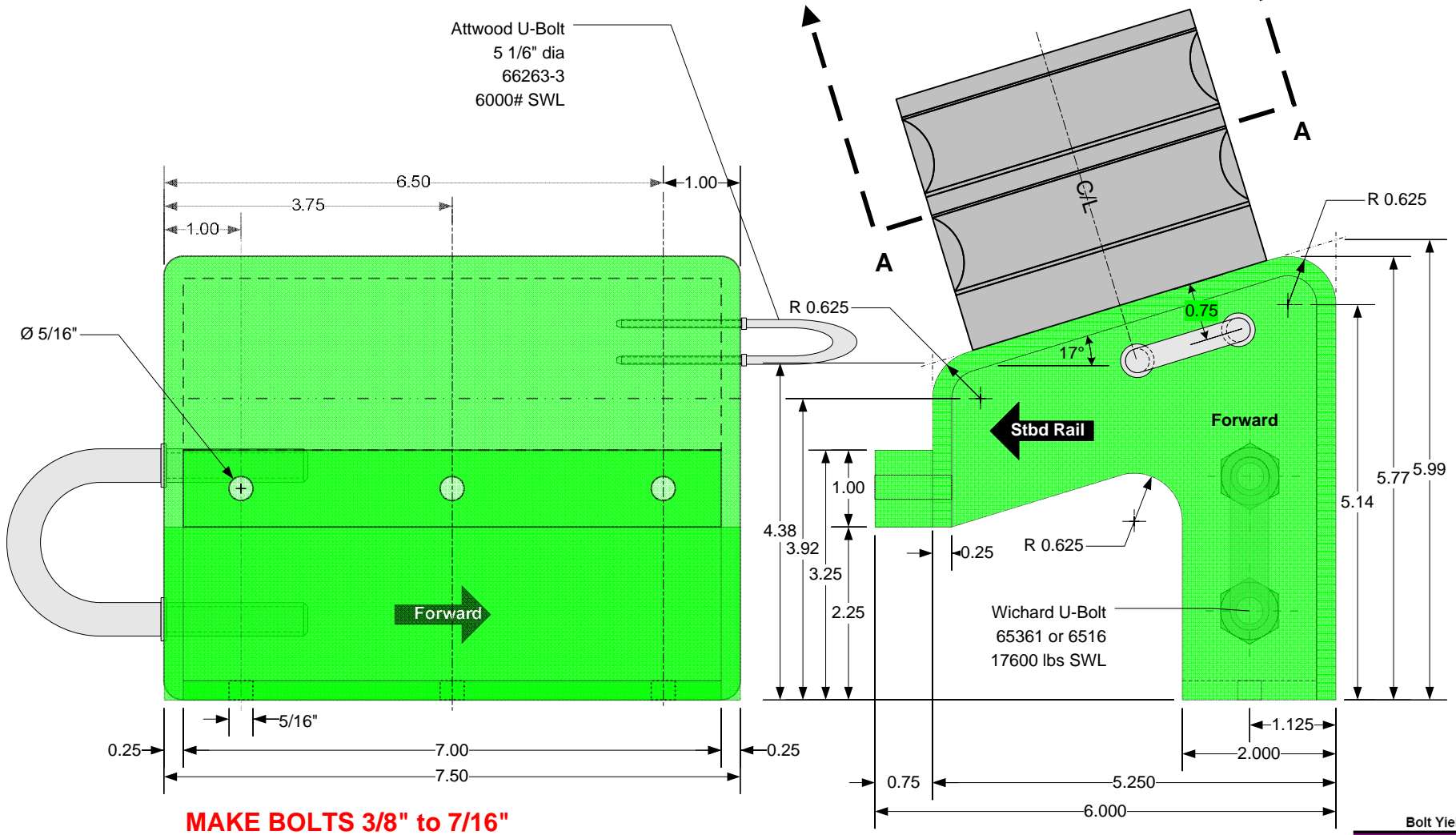


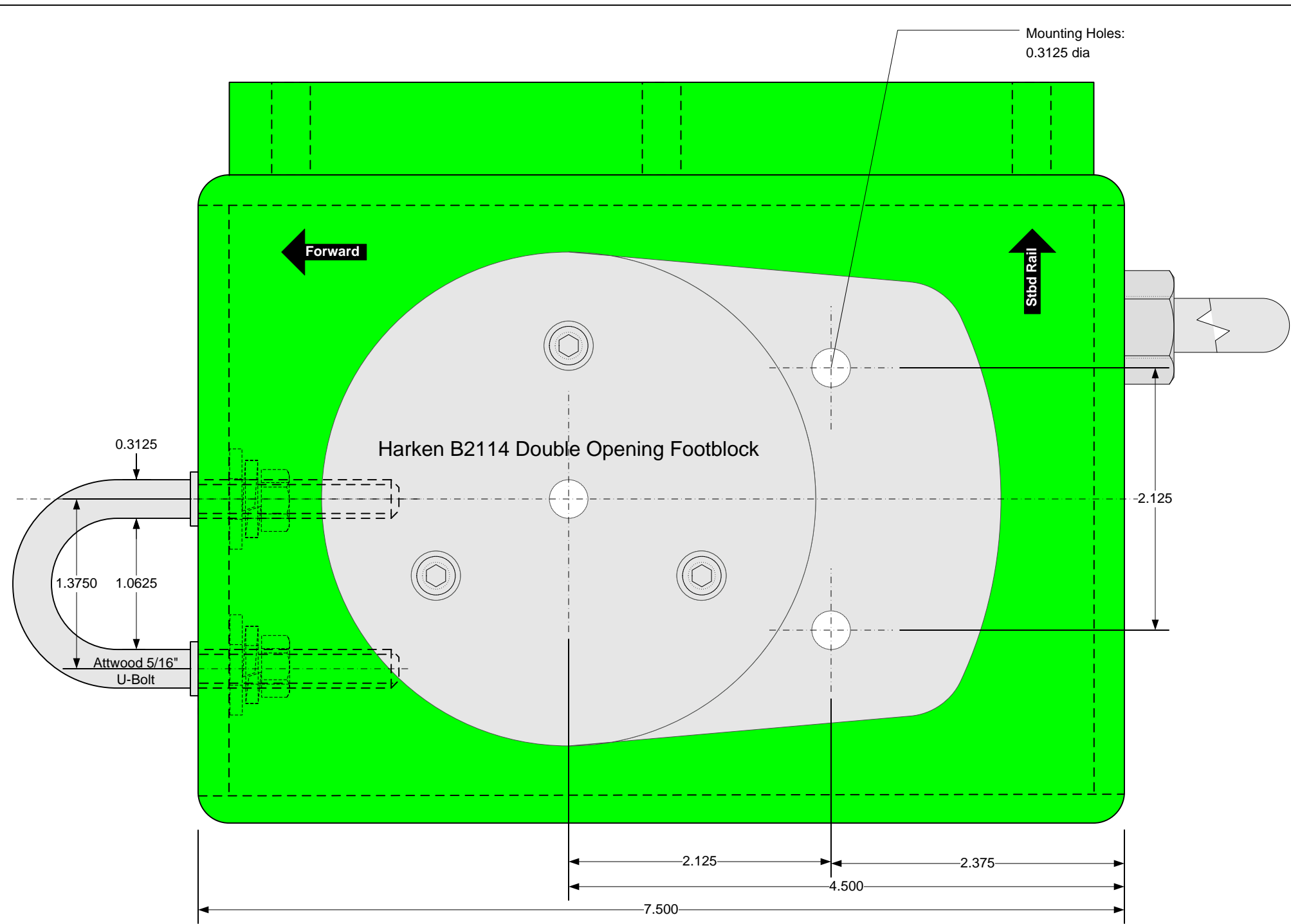
Notes:

1. Material is 316 Stainless Steel
2. Edges should be radiused
3. Corners should be rounded where possible

NOTE: The 17° angle is designed to create a fair lead to a Harken 56 winch mounted on the aft coach house. This should be re-designed to run to a coaming-mounted primary winch.



Bolt Yield Strength			
DIA	SQ. IN.	MIN	TYP
3/8	0.049087385	1963	3927
5/16	0.076699039	3068	6136
3/8	0.110446617	4418	8836
7/16	0.150330117	6013	12026
1/2	0.196349541	7854	15708



S/V BEATRIX - KELLY-PETERSON 44
#286 (1980)

TITLE
Deck Hardware - Stbd Foot Block Mount View "A"

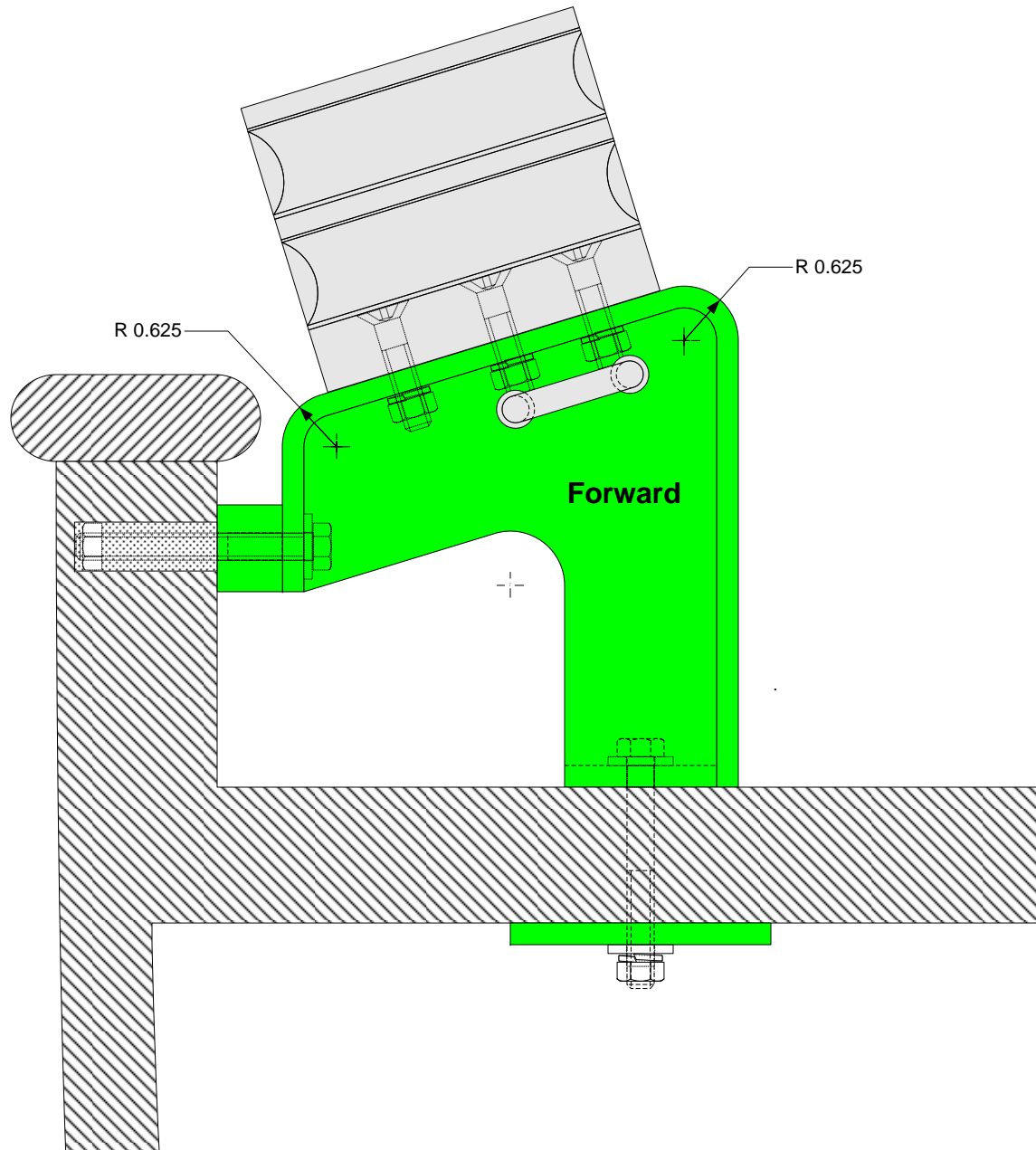
REV
A

SCALE
1:1

PAGE
2 OF 5

DATE
6/07/2018

DRAWN BY
JSTANDER



**HARKEN B2114 BLK-100MM
DOUBLE OPENING FOOT BLOCK**

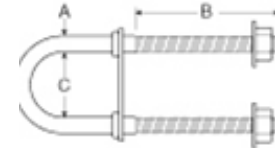
Sheave dia. (in) 3 15/16
 Max. line dia. (in) 9/16
 Length (in) 5 1/2
 Height (in) 2 13/16
 Weight (oz) 47 1/2
 SWL (lb) 4409
 Breaking strength (lb) 8818
 Fasteners (in) 3 x 5/16 FH

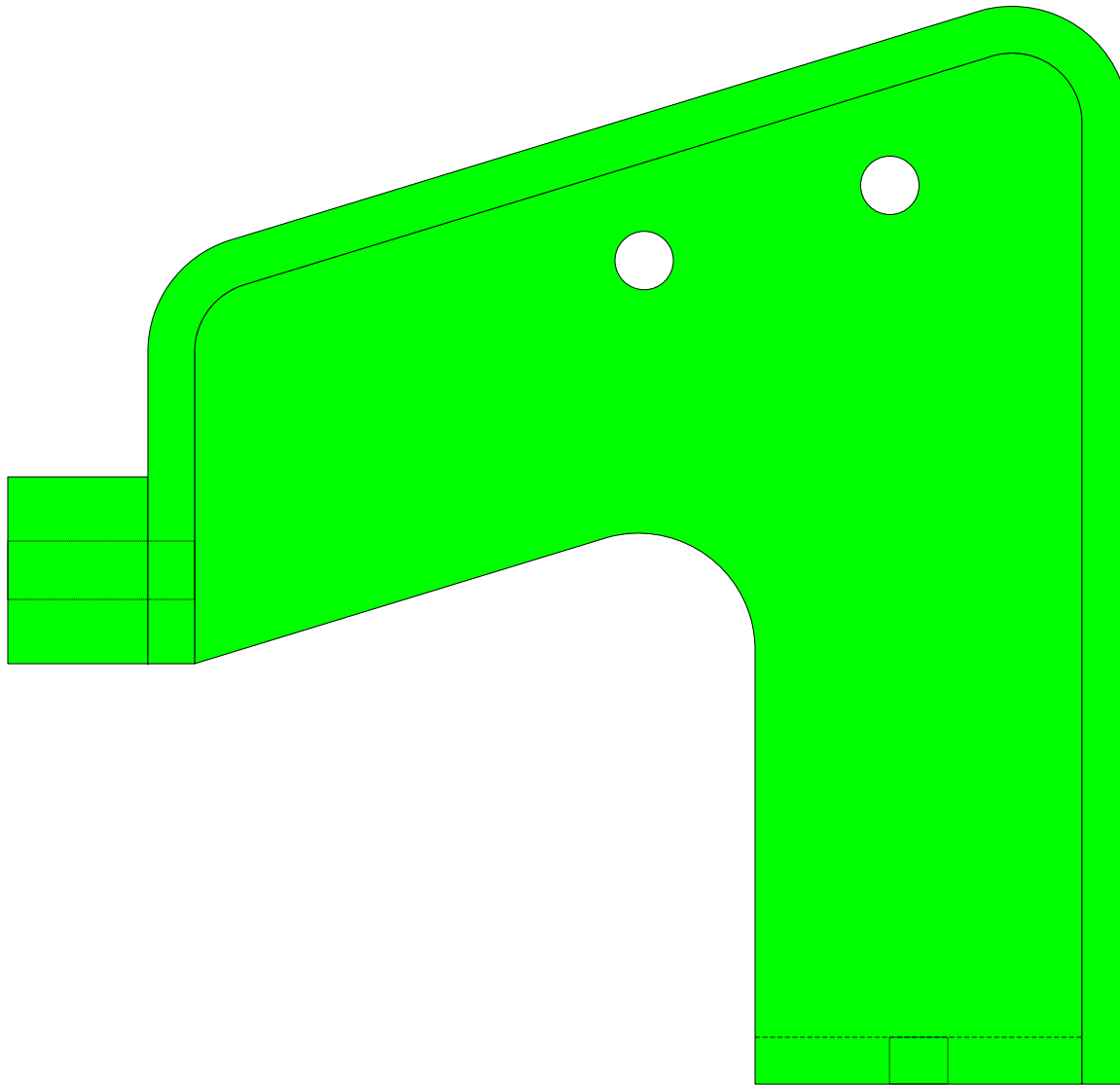
**NOTE: THIS IS NO LONGER AVAILABLE
 SIMILAR NON-OPENING DOUBLE
 FOOTBLOCKS CAN BE FOUND BY
 RONSTAN, HARKEN, LEWMAR, etc.**

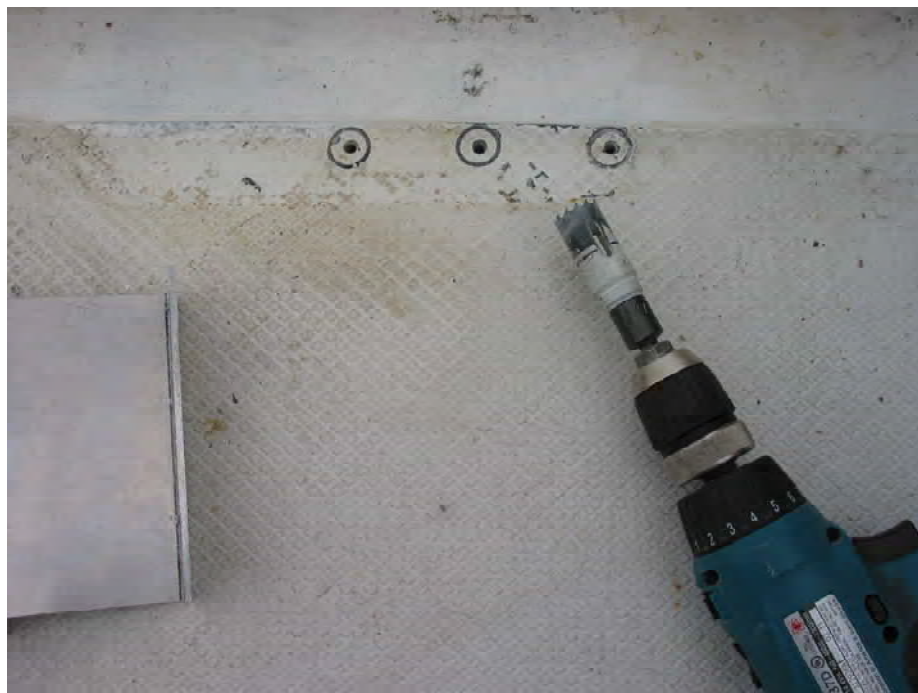


Dimensions			Face Plate Dimensions	Pull Strength (lbs.)	Aftermarket Packaging*
5/16" dia.	3-8"-16 x 2-7/16"	1-1/16"	2-1/2" x 1"	6,000	66263-3
7/16" dia.	1/2"-13 x 3-1/4"	1-9/16"	2-3/4" x 3/4"	12,000	66261-3
7/16" dia.	1/2"-13 x 3-1/4"	1-9/16"	3-1/2" x 1-3/4"	12,000	66262-3

ATTWOOD U-BOLTS







S/V BEATRIX - KELLY-PETERSON 44 #286 (1980)	TITLE Deck Hardware - Photos	PAGE 5 OF 5	SCALE 1: 1	DATE 6/07/2018	DRAWN BY JSTANDER
---	---------------------------------	----------------	---------------	-------------------	----------------------